

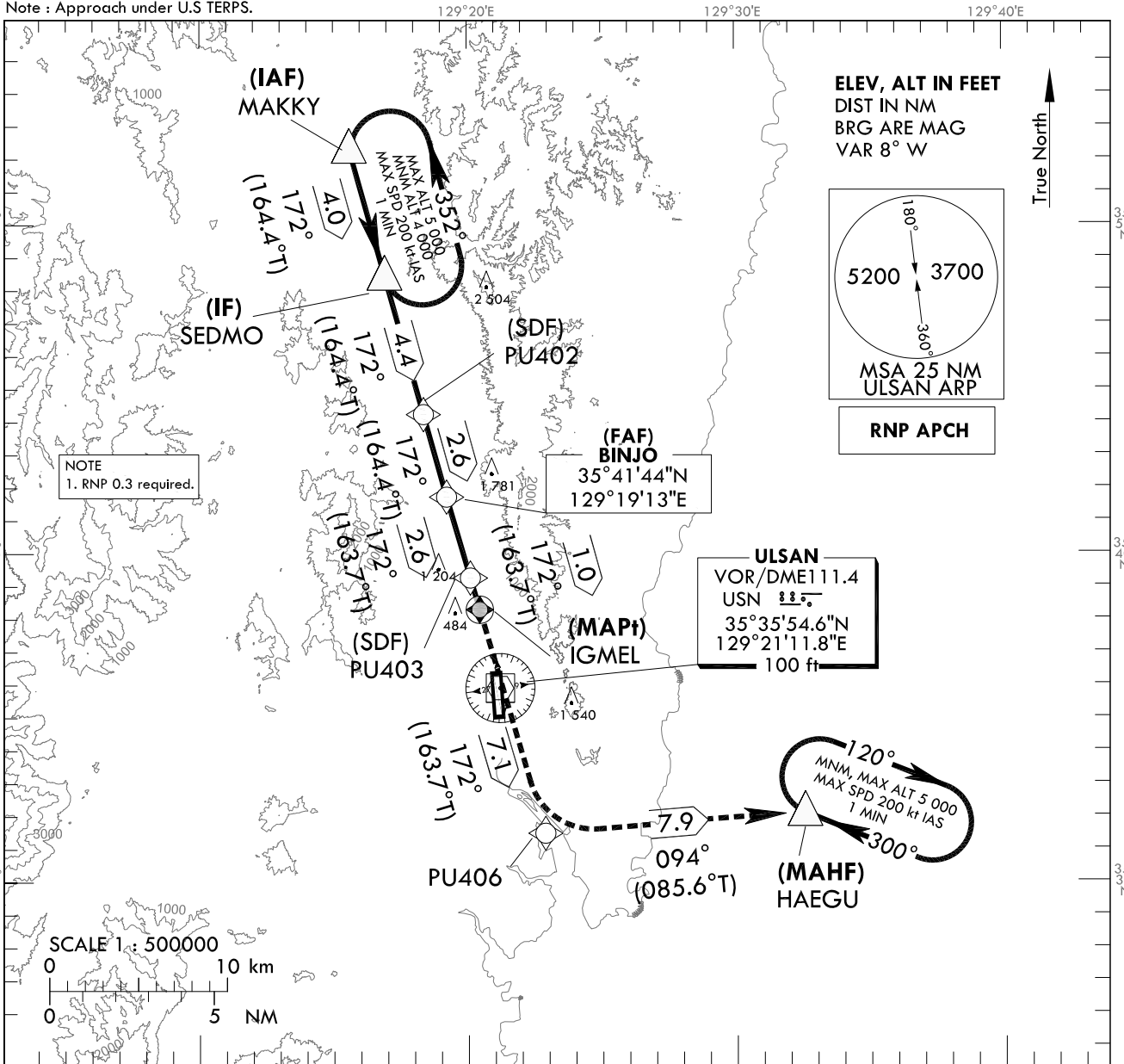
**INSTRUMENT APPROACH CHART**

**AERODROME ELEV 42 ft**  
**HEIGHTS RELATED TO THR RWY 18 - ELEV 42 ft**

POHANG APP 124.25  
120.2  
ULSAN TWR 118.75

**ULSAN/Ulsan(RKPU)**  
**RNP Y RWY 18**

Note : Approach under U.S TERPS.

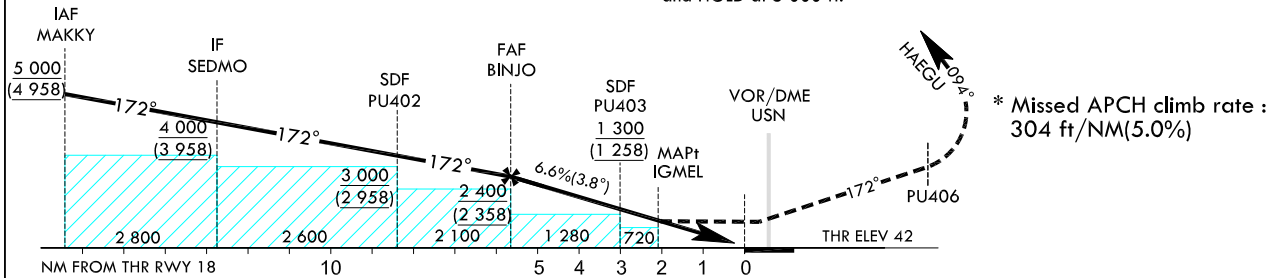


RECOMMENDED PROFILE(FAA)	THR RWY 18	5	4	3	2.2
Final Approach Gradient 6.58%, 400 ft/NM	ALT(HGT)	2 092 (2 050)	1 692 (1 650)	1 292 (1 250)	990 (948)

TRANSITION ALT 14 000  
TRANSITION LVL FL 140

**MISSED APPROACH**

Climb on track of 172° to PU406 then turn left on track of 094° to HAEGU and HOLD at 5 000 ft.



CATEGORY	MDA(H)	A	B	C	D	Rate of descent					
						Knots	60	90	120	150	180
STA	990 (948)	3 600 m	4 000 m	3 900 m	4 300 m	N/A	N/A	N/A	N/A	N/A	N/A

\* Timing Not authorized for defining MAPt.  
\* Circling Not authorized.

Change : Information of fix names(SADOP → SEDMO, WELCH → IGMEL).

ULSAN/Usan(RKPU)  
RNP Y RWY 18  
HOLDING PROCEDURE

AERONAUTICAL DATA TABULATION

Instrument Approach Procedure Coding Tables

Serial Number	Path Descriptor	Waypoint Identifier	Fly-over	Course/Track °M(T)	Distance (NM)	Turn direction	Altitude (ft)	Speed (kt)	Coordinates	VPA/RDH	Navigation specification	Remarks
001	IF	MAKKY	-	-	-	-	+5 000	-	35°52'18.8"N 129°15'35.8"E	-	RNP APCH	IAF
002	TF	SEDMO	-	172(164.4)	4.0	-	+4 000	-	35°48'27.1"N 129°16'55.0"E	-	RNP APCH	IF
003	TF	PU402	-	172(164.4)	4.4	-	+3 000	-	35°44'14.2"N 129°18'21.4"E	-	RNP APCH	SDF
004	TF	BINJO	-	172(164.4)	2.6	-	+2 400	-	35°41'43.5"N 129°19'12.8"E	-	RNP APCH	FAF
005	TF	PU403	-	172(163.7)	2.6	-	+1 300	-	35°39'15.5"N 129°20'05.6"E	-	RNP APCH	SDF
006	TF	IGMEL	Y	172(163.7)	1.0	-	+990	-	35°38'17.7"N 129°20'26.4"E	-3.77/50	RNP APCH	MAPt
007	TF	PU406	-	172(163.7)	7.1	-	-	-	35°31'29.1"N 129°22'52.3"E	-	RNP APCH	-
008	TF	HAEGU	Y	094(085.6)	7.9	-	-	-	35°32'06.7"N 129°32'32.3"E	-	RNP APCH	-
009	HIM	HAEGU	Y	300(292.1)	-	R	@5 000	-200	35°32'06.7"N 129°32'32.3"E	-	RNP APCH	1 min (Outbound timing)

HOLDING PROCEDURE

Holding Identification	Path Descriptor	Waypoint Identifier	Fly-over	Course/Track °M(T)	Time (min)	Turn direction	Altitude (ft)	Speed (kt)	Coordinates	VPA/RDH	Navigation specification	Remarks
RNP Y RWY 18	HIM	SEDMO	Y	172(164.4)	1.0	L	-5 000 +4 000	-200	35°48'27.1"N 129°16'55.0"E	-	RNAV 1	-

Change : Information of fix names(SADOP → SEDMO, WELCH → IGMEL).

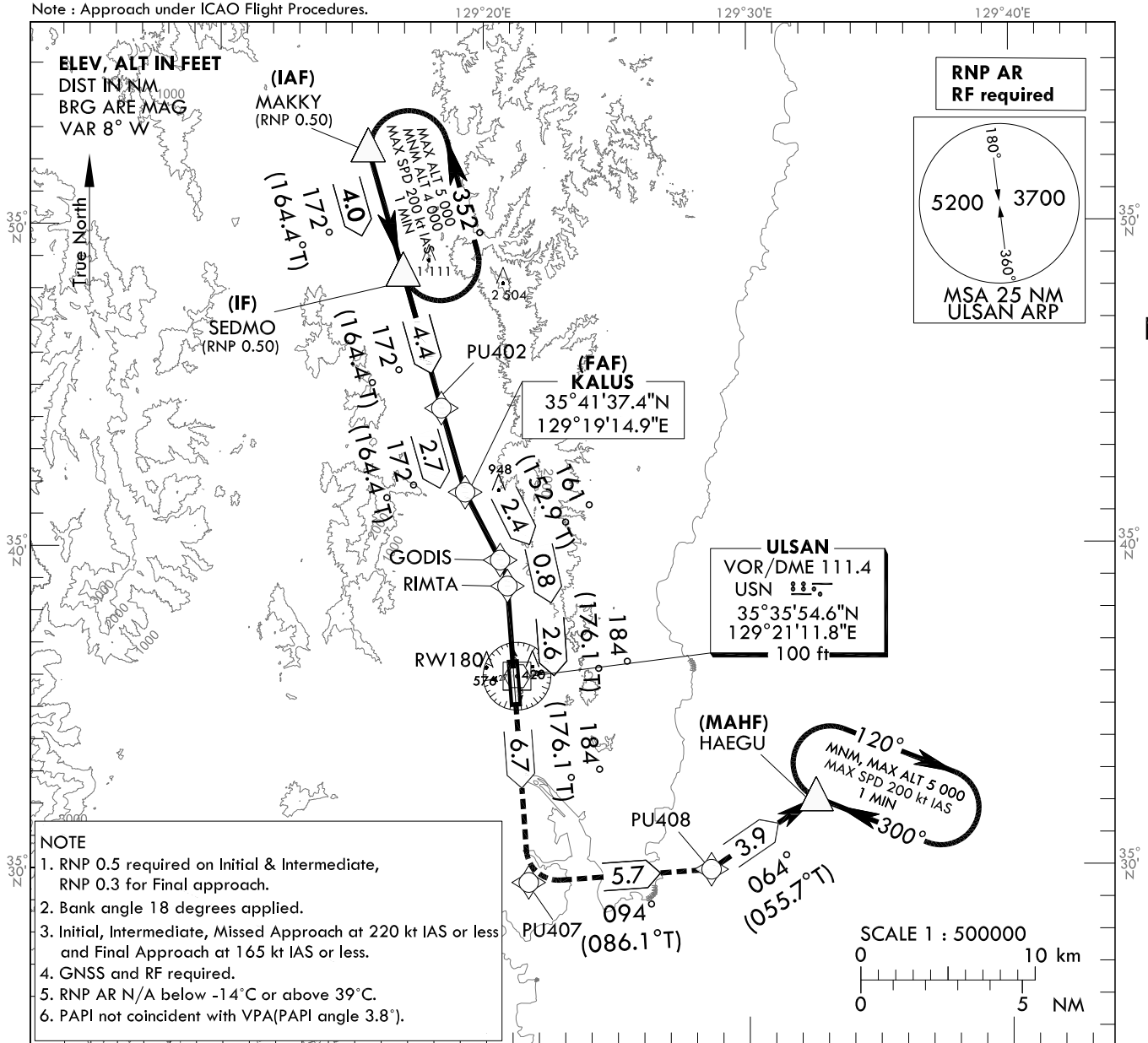
**INSTRUMENT APPROACH CHART**

**AERODROME ELEV 42 ft**  
**HEIGHTS RELATED TO**  
**THR RWY 18 - ELEV 42 ft**

POHANG APP 124.25  
120.2  
ULSAN TWR 118.75

**ULSAN/Ulsan(RKPU)**  
**RNP Z RWY 18(AR)**

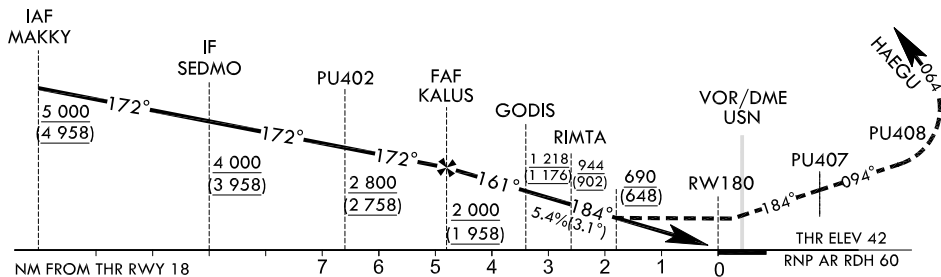
Note : Approach under ICAO Flight Procedures.



**MISSED APPROACH**

Climb on track of 184° to PU407 then turn left on track of 094° to PU408 then turn left on track of 064° to HAEGU and Hold at 5 000 ft.  
\* DA to RW180 1.8 NM.

TRANSITION ALT 14 000  
TRANSITION LVL FL 140



CATEGORY	DA(H)	A	B	C	D	Rate of descent						
						Knots	60	90	120	150	180	
RNP 0.3	BALS	690	3 100 m				V/V fpm	329	494	658	823	987
	NALS	(648)	3 400 m				* Timing Not authorized for defining MAPt. * Circling Not authorized.					

Change : Information of fix name(SADOP → SEDMO).

AERONAUTICAL DATA TABULATION

Instrument Approach Procedure Coding Tables

RNP Z RWY 18 (AR)

Serial Number	Path Descriptor	Waypoint Identifier	Fly-over	Course/Track °M(°T)	Distance (NM)	Turn direction	Altitude (ft)	Speed (kt)	Coordinates	VPA/RDH	Navigation specification	Remarks
001	IF	MAKKY	-	-	-	-	+5 000	-220	35°52'18.8"N 129°15'35.8"E	-	-	IAF
002	TF	SEDMO	-	172(164.4)	4.0	-	+4 000	-220	35°48'27.1"N 129°16'55.0"E	-	0.5	IF
003	TF	PU402	-	172(164.4)	4.4	-	+2 800	-220	35°44'14.2"N 129°18'21.4"E	-	0.5	FAF Bank Angle 18°
004	TF	KALUS	-	172(164.4)	2.7	-	+2 000	-165	35°41'37.4"N 129°19'14.9"E	-	0.3	Bank Angle 18°
005	TF	GODIS	-	161(152.9)	2.4	L	+1 218	-165	35°39'30.7"N 129°20'34.3"E	-3.10	0.3	Bank Angle 18°
006	RF	RIMTA	-	-	0.8	R	+944	-165	35°38'42.4"N 129°20'50.7"E	-3.10	0.3	Bank Angle 18°
007	TF	RW180	Y	184(176.1)	2.6	-	-	-165	35°36'08.9"N 129°21'03.5"E	-3.10/60	0.3	-
008	TF	PU407	-	184(176.1)	6.7	-	-	-220	35°29'30.2"N 129°21'36.8"E	-	1.0	-
009	TF	PU408	-	094(086.1)	5.7	L	-	-220	35°29'53.2"N 129°28'33.2"E	-	1.0	Bank Angle 18°
010	TF	HAEGU	Y	064(055.7)	3.9	L	+5 000	-220	35°32'06.7"N 129°32'32.3"E	-	1.0	Bank Angle 18°
011	HM	HAEGU	Y	300(292.1)	-	R	@5 000	-200	35°32'06.7"N 129°32'32.3"E	-	RNP APCH	1 min (Outbound timing)

RF arc center Identifier	Coordinates
ARC01	35°38'33.8"N 129°18'18.0"E

Change : Information of fix name(SADOP → SEDMO).

**INSTRUMENT APPROACH CHART**

**AERODROME ELEV 42 ft**  
HEIGHTS RELATED TO  
THR RWY 18 - ELEV 42 ft

POHANG APP 124.25  
120.2  
ULSAN TWR 118.75

**ULSAN/Ulsan(RKPU)**

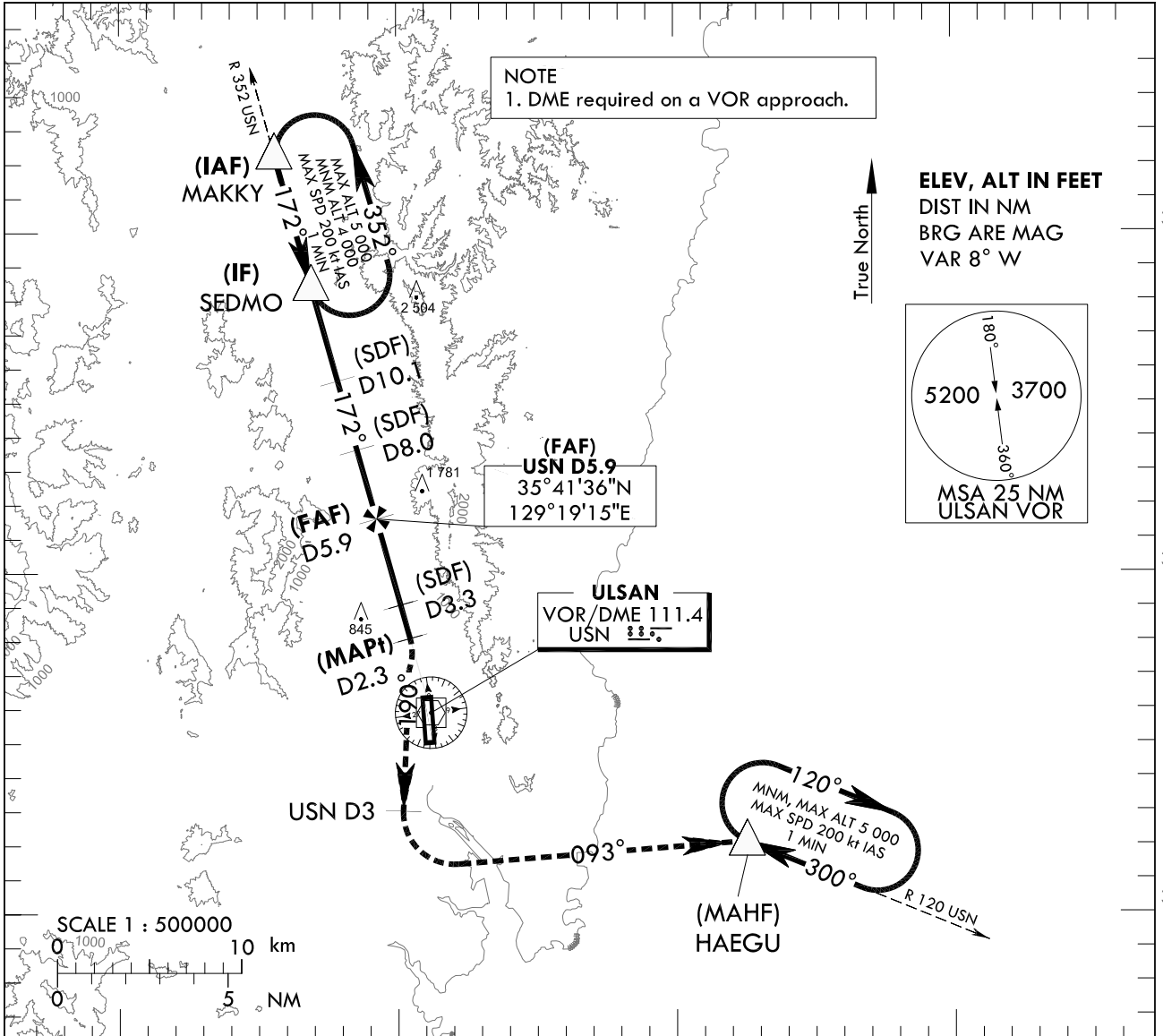
**VOR RWY 18**

Note : Approach under U.S TERPS.

129°20'E

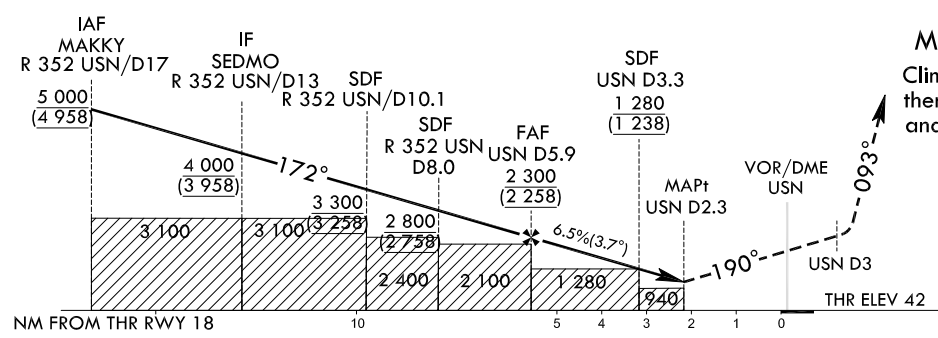
129°30'E

129°40'E



TRANSITION ALT 14 000  
TRANSITION LVL FL 140

RECOMMENDED PROFILE(FAA)		DME USN	5	4	3	2.8
Final Approach Gradient 6.45%, 392 ft/NM		ALT(HGT)	1 947 (1 906)	1 556 (1 514)	1 164 (1 122)	1 080 (1 038)



**MISSED APPROACH**  
Climb on HDG 190° to USN 3DME, then turn left direct to HAEGU and Hold at 5 000 ft.

\* Missed APCH climb rate : 200 ft/NM(3.3%)

CATEGORY		MDA(MDH)	A	B	C	D	Knots					
STA	FULL	1 090 (1 048)	3 600 m	4 600 m	N/A	Rate of descent	V/V fpm	392	588	784	980	1 175
	ALS INOP		4 000 m	4 900 m	N/A	* Timing Not authorized for defining MAPt. * Circling Not authorized.						

Change : Information of fix name(SADOP → SEDMO).

ULSAN/Ulsan(RKPU)  
VOR RWY 18

AERONAUTICAL DATA TABULATION

VOR Approach to RWY 18 from MAKKY			
Fix/point		Coordinates	
MAKKY (IAF)	R 352 USN / 17.00 NM USN	35°52'18.8"N	129°15'35.8"E
SEDMO (IF)	BRG 172.29° / 13.00 NM USN	35°48'27.1"N	129°16'55.0"E
D10.1 USN (SDF)	BRG 172.29° / 10.10 NM USN	35°45'39.1"N	129°17'51.8"E
D8.0 USN (SDF)	BRG 172.29° / 8.00 NM USN	35°43'37.6"N	129°18'33.5"E
D5.9 USN (FAF)	BRG 172.29° / 5.90 NM USN	35°41'36.0"N	129°19'15.1"E
D3.3 USN (SDF)	BRG 172.29° / 3.28 NM USN	35°39'04.4"N	129°20'07.0"E
D2.3 USN (MAPt)	BRG 172.29° / 2.26 NM USN	35°38'05.4"N	129°20'27.1"E
THR RWY 18		35°36'08.89"N	129°21'03.54"E
USN VOR/DME		35°35'54.6"N	129°21'11.8"E
D3 USN	BRG 190.29° / 3.00 NM USN	35°33'01.3"N	129°20'11.6"E
HAEGU	BRG 93.43° / 10.00 NM USN	35°32'06.7"N	129°32'32.3"E

Change : Information of fix name(SADOP → SEDMO).

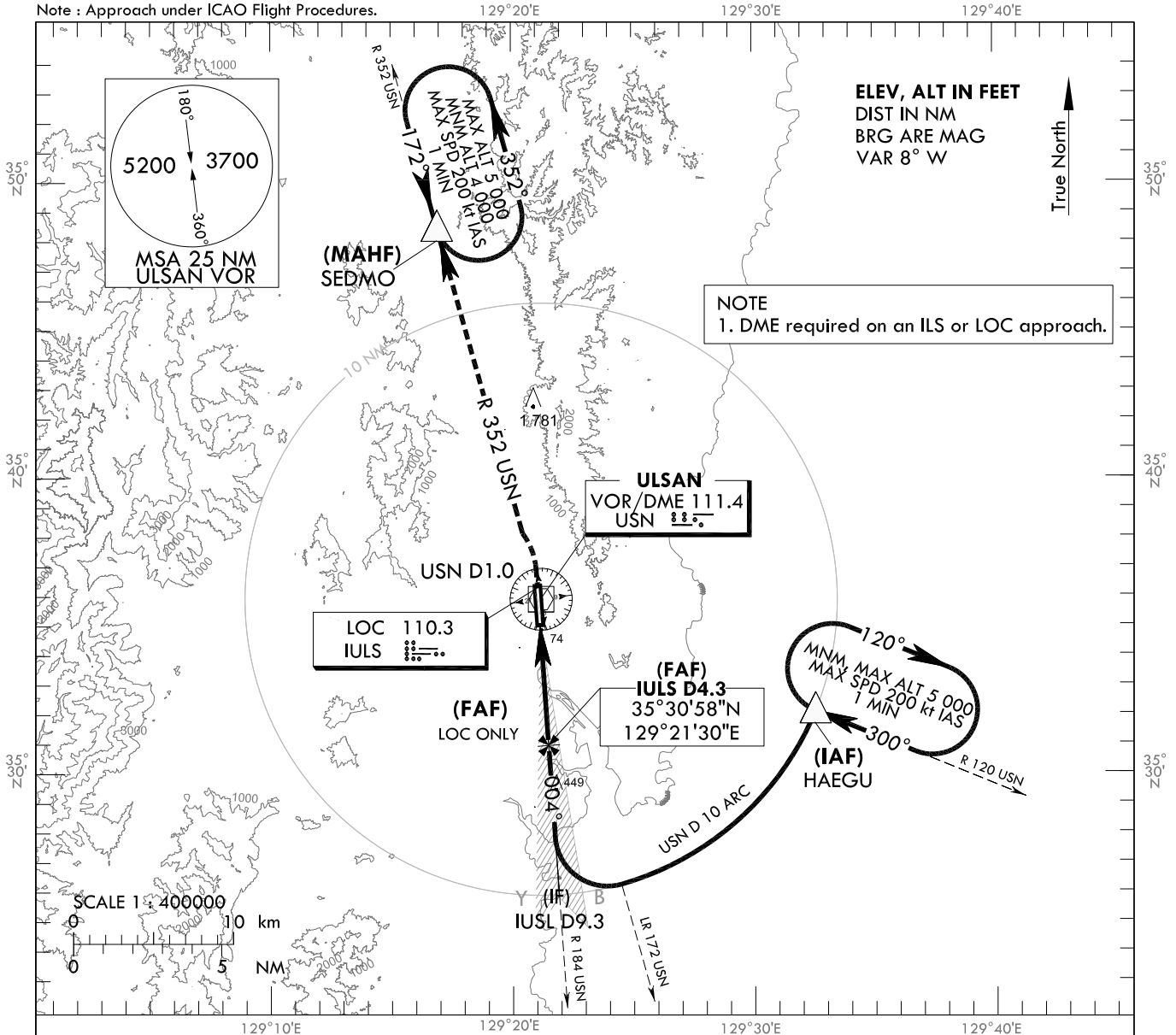
**INSTRUMENT APPROACH CHART - ICAO**

**AERODROME ELEV 42 ft**  
HEIGHTS RELATED TO  
THR RWY 36 - ELEV 28 ft

POHANG APP 124.25  
120.2  
ULSAN TWR 118.75

**ULSAN/Ulsan(RKPU)**  
ILS or LOC Y RWY 36

Note : Approach under ICAO Flight Procedures.



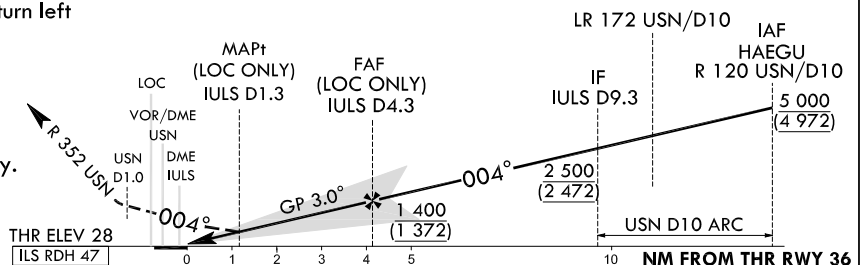
RECOMMENDED PROFILE(LOC ONLY)	DME IULS	6	5	4	3	2.3
Final Approach Gradient 5.28%, 321 ft/NM	ALT(HGT)	1 950 (1 922)	1 620 (1 592)	1 300 (1 272)	980 (952)	750 (722)

TRANSITION ALT 14 000  
TRANSITION LVL FL 140

**MISSED APPROACH**

Climb on HDG 004° to USN 1 DME, then turn left to intercept R 352 USN to SEDMO.  
Hold at SEDMO at 4 000 ft.

\* Missed APCH turn limited to MAX 200 kt IAS when 2.5% CG apply.



CATEGORY		DA(DH)/MDA(MDH)	A	B	C	D								
STA	CAT-I (CG 2.5%)	FULL	710	3 000 m				Rate of descent	Knots	60	90	120	150	180
		ALS INOP	(682)	3 700 m										
	CAT-I (CG 5.0%)	FULL	246	800 m										
		ALS INOP	(218)	1 200 m										
	LOC	FULL	750	2 700 m										
		ALS INOP	(722)	3 400 m										

\* Timing Not authorized for defining MAPt.  
\* Circling Not authorized.

Change : Information of fix name(SADOP → SEDMO).



ULSAN/Ulsan(RKPU)  
ILS or LOC Y RWY 36

AERONAUTICAL DATA TABULATION

ILS/LOC Y Approach to RWY 36 from HAEGU			
Fix/point		Coordinates	
HAEGU(IAF)	R 120 USN / 10.00 NM USN	35°32'06.7"N	129°32'32.3"E
D9.3 IULS (IF)	BRG 3.97° / 9.30 NM IULS	35°25'54.7"N	129°21'54.8"E
D4.3 IULS (FAP)	BRG 3.97° / 4.30 NM IULS	35°30'57.6"N	129°21'29.5"E
D1.3 IULS (MAPt LOC ONLY)	BRG 3.97° / 1.30 NM IULS	35°33'55.7"N	129°21'14.7"E
THR RWY 36		35°35'04.15"N	129°21'08.95"E
IULS DME		35°35'13.8"N	129°21'12.2"E
USN VOR/DME		35°35'54.6"N	129°21'11.8"E
IULS LOC		35°36'16.3"N	129°21'02.9"E
D1.0 USN	BRG 3.97° / 1.00 NM USN	35°36'53.8"N	129°20'59.8"E
SEDMO	BRG 352.34° / 13.00 NM USN	35°48'27.1"N	129°16'55.0"E

Change : Information of fix name(SADOP → SEDMO).



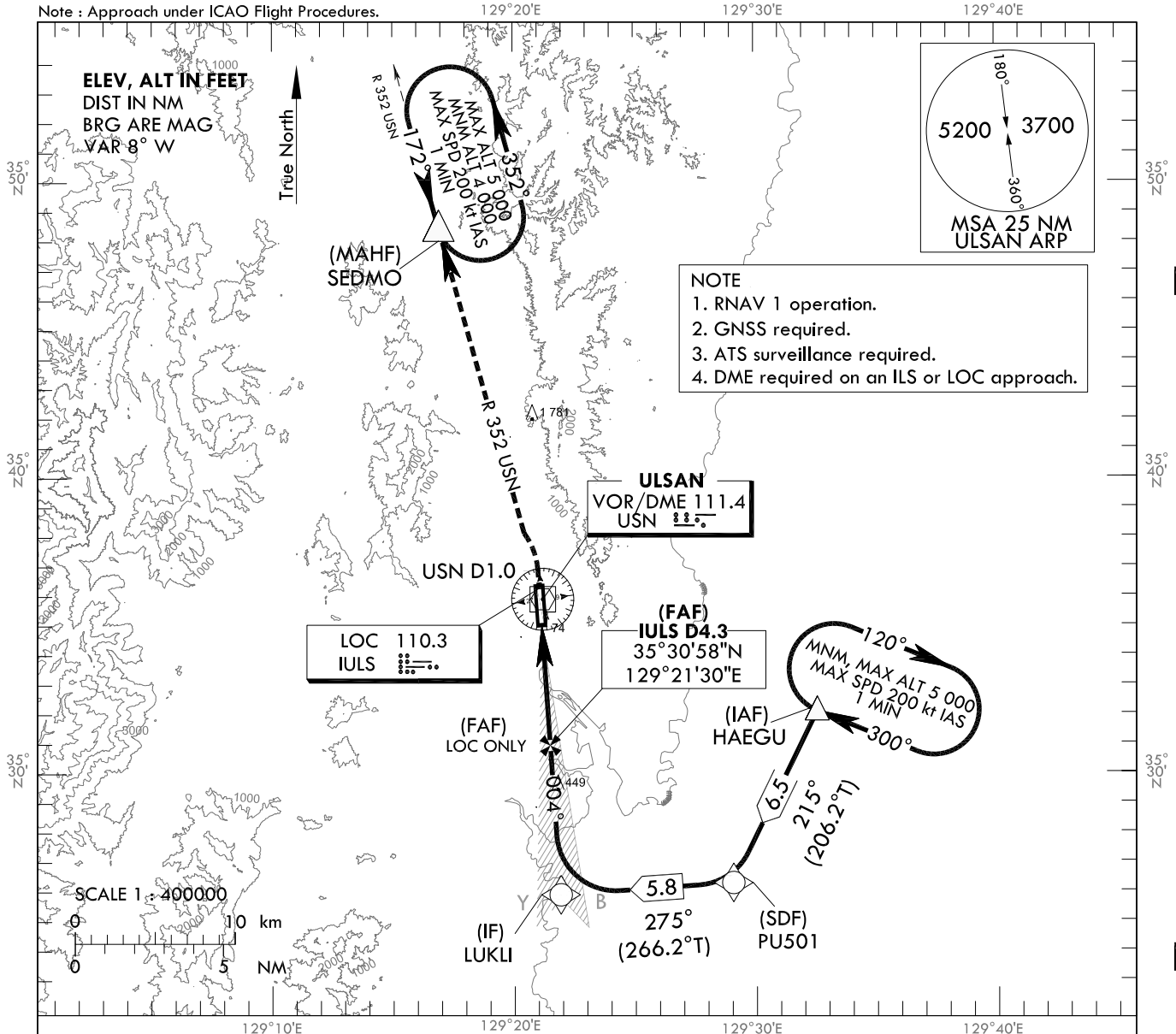
**INSTRUMENT APPROACH CHART - ICAO**

**AERODROME ELEV 42 ft**  
HEIGHTS RELATED TO  
THR RWY 36 - ELEV 28 ft

POHANG APP 124.25  
120.2  
ULSAN TWR 118.75

**ULSAN/Ulsan(RKPU)**  
ILS or LOC Z RWY 36

Note : Approach under ICAO Flight Procedures.



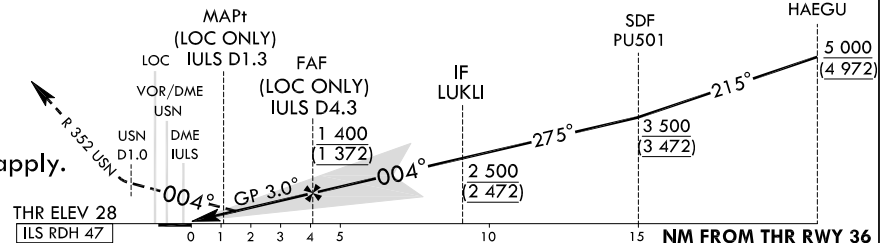
RECOMMENDED PROFILE(LOC ONLY)	DME IULS	6	5	4	3	2.3
Final Approach Gradient 5.28%, 321 ft/NM	ALT(HGT)	1 950 (1 922)	1 620 (1 592)	1 300 (1 272)	980 (952)	750 (722)

TRANSITION ALT 14 000  
TRANSITION LVL FL 140

**MISSED APPROACH**

Climb on HDG 004° to USN 1 DME, then turn left to intercept R 352 USN to SEDMO.  
Hold at SEDMO at 4 000 ft.

\* Missed APCH turn limited to MAX 200 kt IAS when 2.5% CG apply.



CATEGORY		DA(DH)/MDA(MDH)	A	B	C	D								
STA	CAT-I (CG 2.5%)	FULL	710	3 000 m				Rate of descent	Knots	60	90	120	150	180
		ALS INOP	(682)	3 700 m										
	CAT-I (CG 5.0%)	FULL	246	800 m										
		ALS INOP	(218)	1 200 m										
	LOC	FULL	750	2 700 m										
		ALS INOP	(722)	3 400 m										
							* Timing Not authorized for defining MAPt.							
							* Circling Not authorized.							

Change : Information of fix names(SADOP → SEDMO, MEYJI → LUKLI).

ULSAN/Ulsan(RKPU)  
ILS or LOC Z RWY 36

AERONAUTICAL DATA TABULATION

ILS/LOC Z Approach to RWY 36 from HAEGU			
Fix/point		Coordinates	
HAEGU(IAF)		35°32'06.7"N	129°32'32.3"E
PU501(SDF)		35°26'18.1"N	129°29'02.9"E
LUKLI (IF)	BRG 3.97° / 9.30 NM IULS	35°25'54.4"N	129°21'54.8"E
D4.3 IULS (FAP)	BRG 3.97° / 4.30 NM IULS	35°30'57.6"N	129°21'29.5"E
D1.3 IULS (MAPt LOC ONLY)	BRG 3.97° / 1.30 NM IULS	35°33'55.7"N	129°21'14.7"E
THR RWY 36		35°35'04.15"N	129°21'08.95"E
IULS DME		35°35'13.8"N	129°21'12.2"E
USN VOR/DME		35°35'54.6"N	129°21'11.8"E
IULS LOC		35°36'16.3"N	129°21'02.9"E
D1.0 USN	BRG 3.97° / 1.00 NM USN	35°36'53.8"N	129°20'59.8"E
SEDMO	BRG 352.34° / 13.00 NM USN	35°48'27.1"N	129°16'55.0"E

Change : Information of fix names(SADOP → SEDMO, MEYJI → LUKLI).

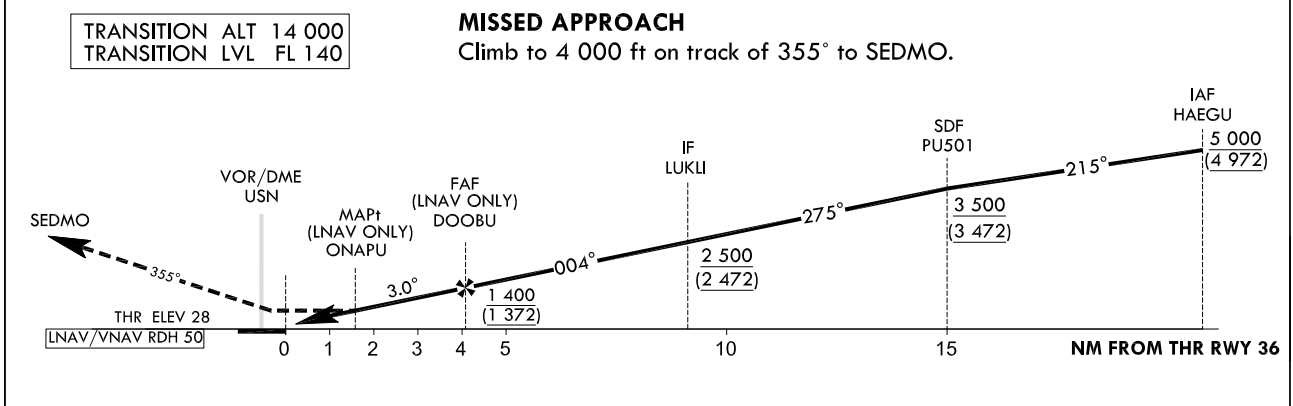
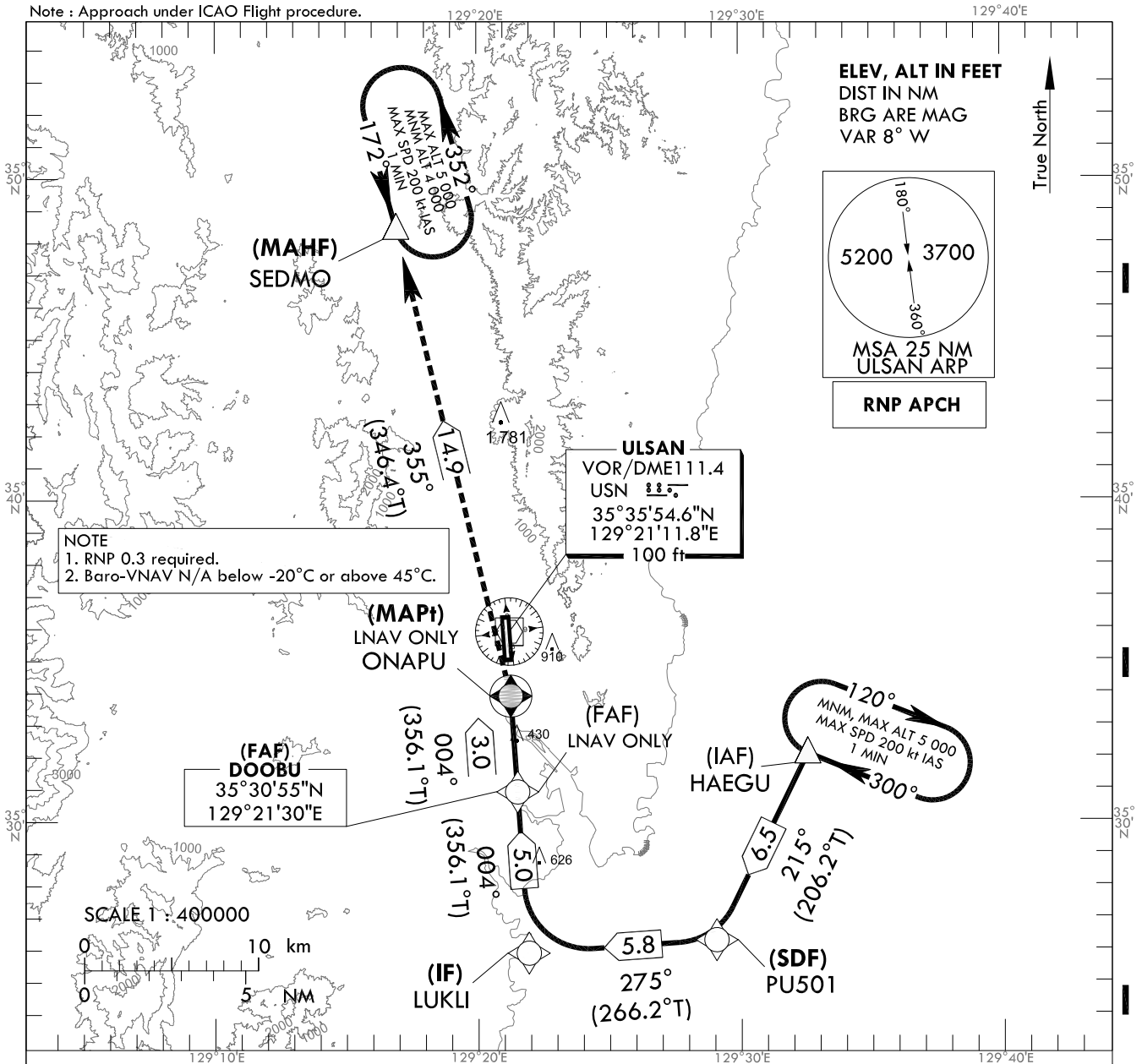
**INSTRUMENT  
APPROACH  
CHART - ICAO**

**AERODROME ELEV 42 ft**  
HEIGHTS RELATED TO  
THR RWY 36 - ELEV 28 ft

POHANG APP 124.25  
120.2  
ULSAN TWR 118.75

**ULSAN/Ulsan(RKPU)**  
**RNP RWY 36**

Note : Approach under ICAO Flight procedure.



CATEGORY		DA(H)/MDA(H)	A	B	C	D	Rate of descent	Knots	60	90	120	150	180
STA	LN/VNAV	FULL	760	2 700 m				V/V fpm	319	478	637	796	956
		ALS INOP	(732)	3 400 m									
	LN/VNAV	FULL	910	3 300 m									
		ALS INOP	(882)	4 000 m									

\* Timing Not authorized for defining MAPt.  
\* Circling Not authorized.

Change : Information of fix names(CACAO → ONAPU, SADOP → SEDMO, MEYJI → LUKLI).

ULSAN/Ulsan(RKPU)  
RNP RWY 36  
HOLDING PROCEDURE

AERONAUTICAL DATA TABULATION

Instrument Approach Procedure Coding Tables

RNP RWY 36

Serial Number	Path Descriptor	Waypoint Identifier	Fly-over	Course/Track °M(T)	Distance (NM)	Turn direction	Altitude (ft)	Speed (kt)	Coordinates	VPA/RDH	Navigation specification	Remarks
001	IF	HAEGU	-	-	-	-	+5 000	-	35°32'06.7"N 129°32'32.3"E	-	RNP APCH	IAF
002	TF	PUS01	-	215(206.2)	6.5	-	+3 500	-	35°26'18.1"N 129°29'02.9"E	-	RNP APCH	SDF
003	TF	LULKI	-	275(266.2)	5.8	-	+2 500	-	35°25'54.4"N 129°21'54.8"E	-	RNP APCH	IF
004	TF	DOOBU	-	004(356.1)	5.0	-	+1 400	-	35°30'55.3"N 129°21'29.7"E	-	RNP APCH	FAF
005	TF	ONAPU	Y	004(356.1)	3.0	-	+910	-	35°33'54.4"N 129°21'14.8"E	-3.00/50	RNP APCH	MAPt
006	TF	SEDMO	Y	355(346.4)	14.9	-	-	-	35°48'27.1"N 129°16'55.0"E	-	RNP APCH	-
007	HIM	SEDMO	Y	172 (164.4)	-	-	-5 000 +4 000	-	35°48'27.1"N 129°16'55.0"E	-	RNP APCH	1 min (Outbound timing)

HOLDING PROCEDURE

Holding Identification	Path Descriptor	Waypoint Identifier	Fly-over	Course/Track °M(T)	Time (min)	Turn direction	Altitude (ft)	Speed (kt)	Coordinates	VPA/RDH	Navigation specification	Remarks
RNP RWY 36	HIM	HAEGU	Y	300 (292.1)	1.0	R	@5 000	-200	35°32'06.7"N 129°32'32.3"E	-	RNAV 1	-

Change : Information of fix names(CACAO → ONAPU, SADOP → SEDMO, MEYJI → LULKI).

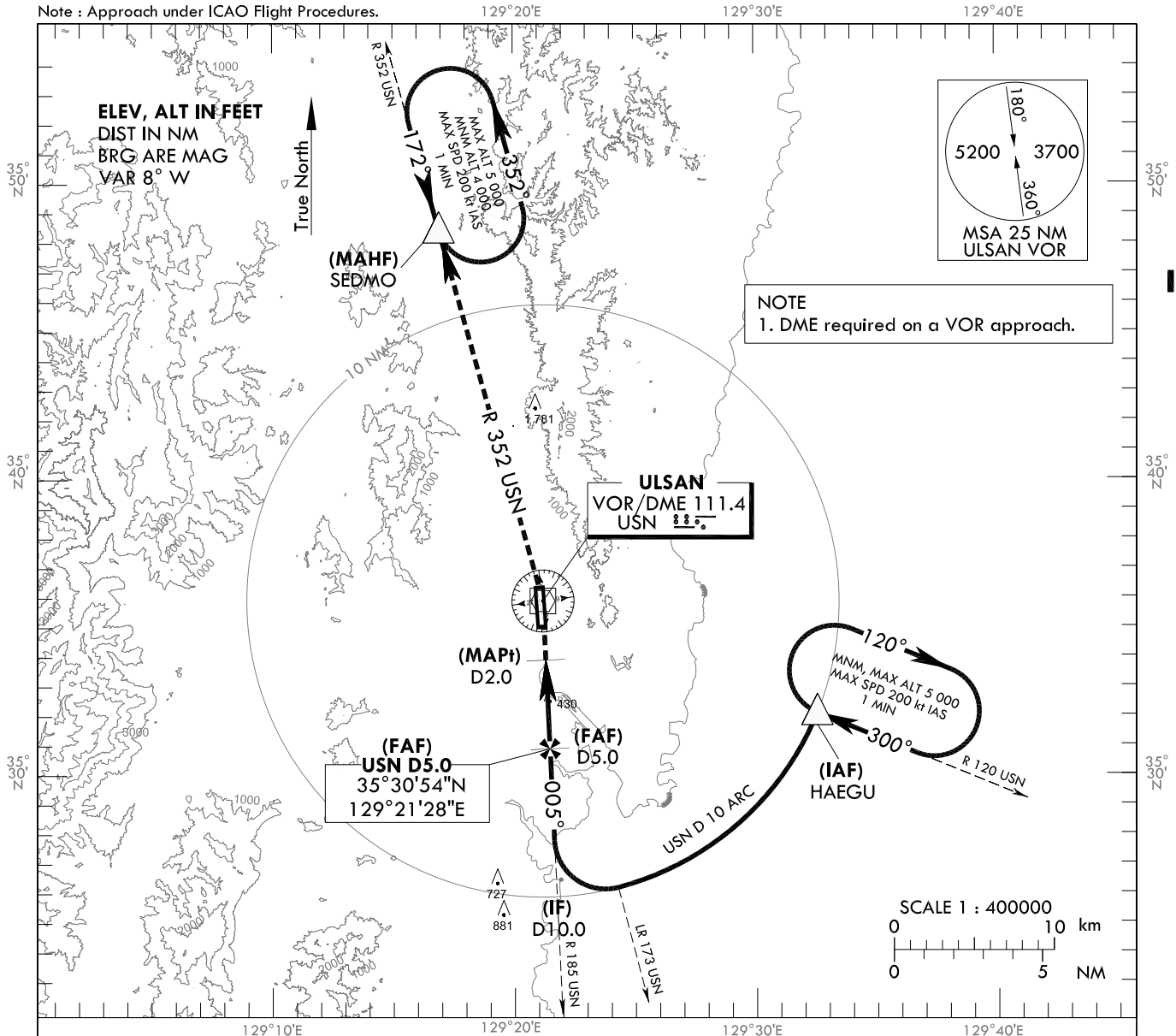
**INSTRUMENT APPROACH CHART - ICAO**

**AERODROME ELEV 42 ft**  
HEIGHTS RELATED TO  
THR RWY 36 - ELEV 28 ft

POHANG APP 124.25  
120.2  
ULSAN TWR 118.75

**ULSAN/Ulsan(RKPU)**  
**VOR RWY 36**

Note : Approach under ICAO Flight Procedures.

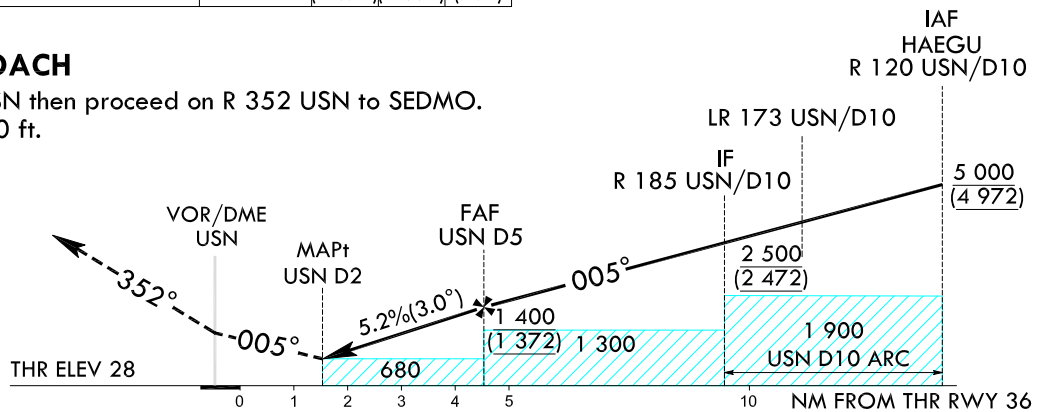


RECOMMENDED PROFILE	DME USN	5	4	3
Final Approach Gradient 5.24%, 318 ft/NM	ALT(HGT)	1 400 (1 372)	1 080 (1 052)	760 (732)

TRANSITION ALT 14 000  
TRANSITION LVL FL 140

**MISSED APPROACH**

Climb direct to USN then proceed on R 352 USN to SEDMO. and Hold at 4 000 ft.



CATEGORY		MDA(MDH)	A	B	C	D	Knots										
STA	FULL	760 (732)		2 700 m			60	90	120	150	180	Rate of descent V/V fpm	318	477	636	795	954
	ALS INOP			3 400 m													

\* Timing Not authorized for defining MAPt.  
\* Circling Not authorized.

Change : Information of fix name(SADOP → SEDMO).

ULSAN/Ulsan(RKPU)  
 VOR RWY 36

AERONAUTICAL DATA TABULATION

VOR Approach to RWY 36 from HAEGU			
Fix/point		Coordinates	
HAEGU (IAF)	R 120 USN / 10.00 NM USN	35°32'06.7"N	129°32'32.3"E
D10 USN (IF)	BRG 5.29° / 10.00 NM USN	35°25'54.3"N	129°21'44.9"E
D5 USN (FAF)	BRG 5.29° / 5.00 NM USN	35°30'54.4"N	129°21'28.4"E
D2 USN (MAPt)	BRG 5.29° / 2.00 NM USN	35°33'54.5"N	129°21'18.5"E
THR RWY 36		35°35'04.15"N	129°21'08.95"E
USN VOR/DME		35°35'54.6"N	129°21'11.8"E
SEDMO	BRG 352.34° / 13.00 NM USN	35°48'27.1"N	129°16'55.0"E

Change : Information of fix name(SADOP → SEDMO).